



Figure 3

Job Number: 26146	Produced By: HEH	Modified: 4/7/2017	Modified By:
File: Z:\26146\26146.0000\GIS\Map\Exhibits\Phase 2\Alt1B.mxd			Vertical Datum:
Thomas & Hutton compiled the map information from the following sources:			
Data	Source	Date	
Alt1/Nodes/Links	T&H	2017	
Parcels	Horry County	2015	
Contours	Horry County	2010	
<small>DISCLAIMER Where Thomas & Hutton is cited as the data source, the firm has created or verified the data. For all other sources cited, Thomas & Hutton used the data "as is," has made no independent investigation of the data, and makes no representation as to the accuracy or completeness of the data. Please see each source for available documentation of its respective datasets. Copyright © 2015 by Thomas & Hutton. No part of this document may be reproduced without written permission from an officer of Thomas & Hutton.</small>			

Highway 9 & 57 Drainage Study

Horry County, South Carolina

Alternative 1B

THOMAS & HUTTON
 682 JOHNNIE DODDS BLVD., SUITE 100
 MT. PLEASANT, SC 29464 • 843.849.0200
 www.thomasandhutton.com
 GEOGRAPHIC INFORMATION SYSTEMS

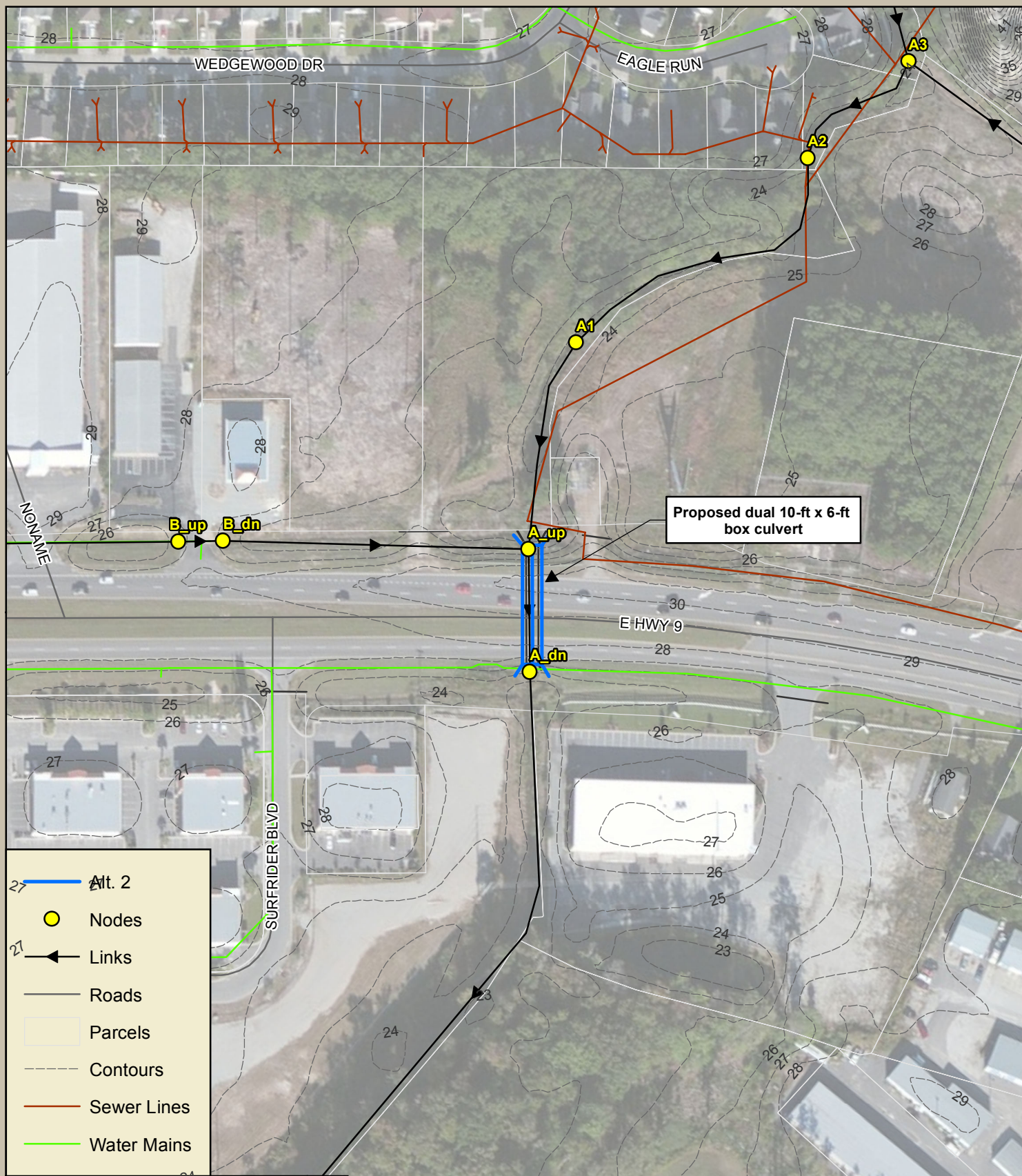


Figure 4

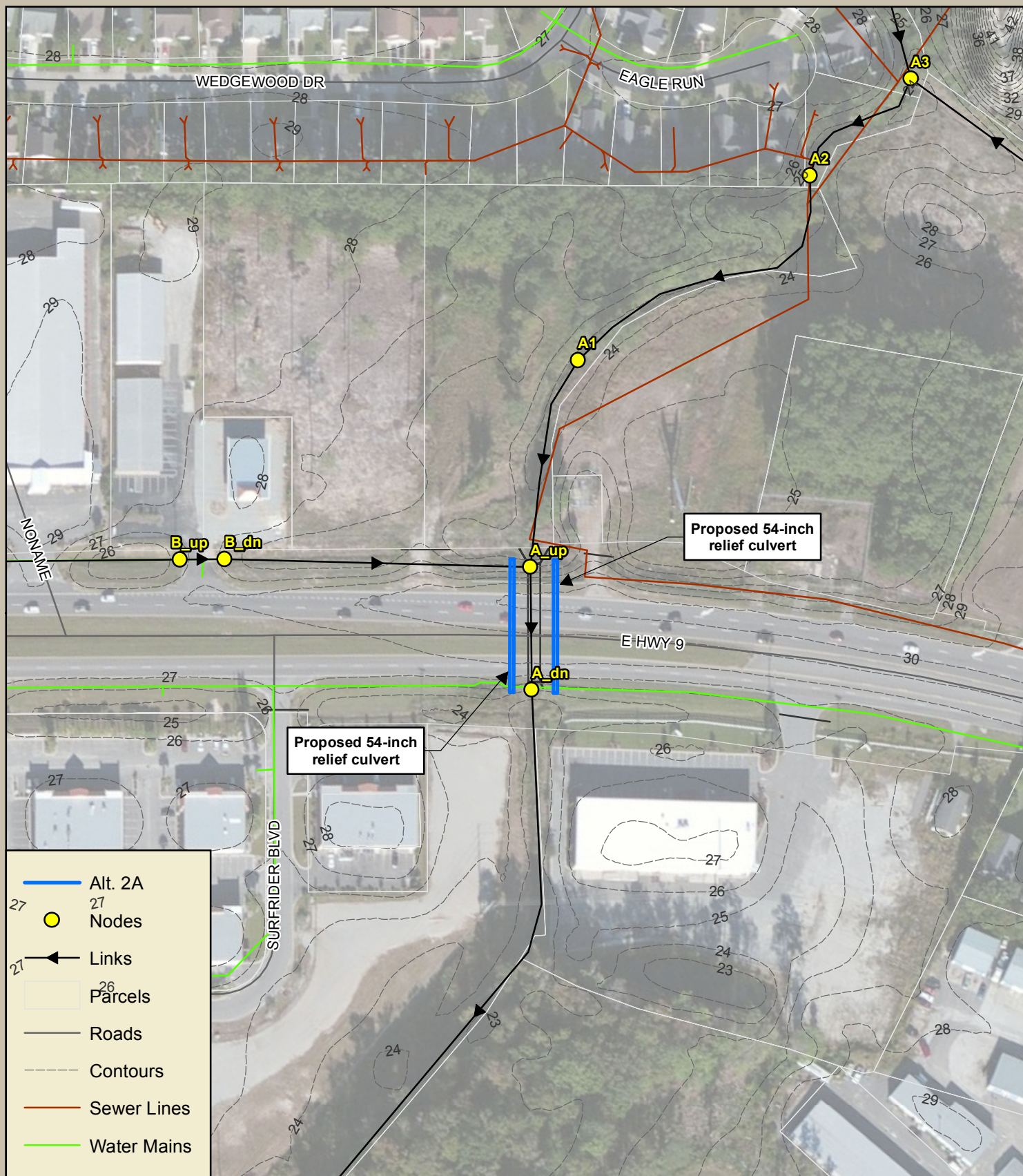
Job Number: 26146	Produced: 03/28/17	Produced By: HEH	Modified: 4/7/2017	Modified By:
File: Z:\26146\26146.0000\GIS\Map\Exhibits\Phase 2\Alt2.mxd				Vertical Datum:
Thomas & Hutton compiled the map information from the following sources:				
Data	Source		Date	
Alt1/Nodes/Links	T&H		2017	
Parcels	Horry County		2015	
Roads	Horry County		2015	
Contours	Horry County		2010	
<small>DISCLAIMER Where Thomas & Hutton is cited as the data source, the firm has created or verified the data. For all other sources cited, Thomas & Hutton used the data "as is," has made no independent investigation of the data, and makes no representation as to the accuracy or completeness of the data. Please see each source for available documentation of its respective datasets. Copyright © 2015 by Thomas & Hutton No part of this document may be reproduced without written permission from an officer of Thomas & Hutton.</small>				

Highway 9 & 57 Drainage Study

Horry County, South Carolina

Alternative 2

THOMAS & HUTTON
682 JOHNNIE DODDS BLVD., SUITE 100
MT. PLEASANT, SC 29464 • 843.849.0200
www.thomasandhutton.com
GEOGRAPHIC INFORMATION SYSTEMS



Source: Esri, DigitalGlobe, GeoEye, Earthstar Geographics, USGS, USGS, AeroGRID, IGN, and the GIS User Community

Figure 5

Job Number: 26146	Produced By: HET	Modified: 4/7/2017	Modified By:
File: Z:\26146\26146.0000\GIS\Mxd\Exhibits\Phase 2\Alt2A.mxd			Vertical Datum:
Thomas & Hutton compiled the map information from the following sources:			
Data	Source	Date	
Alt/Nodes/Links	T&H	2017	
Parcels	Horry County	2015	
Roads	Horry County	2015	
Contours	Horry County	2010	
<small>DISCLAIMER Where Thomas & Hutton is cited as the data source, the firm has created or verified the data. For all other sources cited, Thomas & Hutton used the data "as is," has made no independent investigation of the data, and makes no representation as to the accuracy or completeness of the data. Please see each source for available documentation of its respective datasets. Copyright © 2015 by Thomas & Hutton No part of this document may be reproduced without written permission from an officer of Thomas & Hutton.</small>			

Highway 9 & 57 Drainage Study

Horry County, South Carolina

Alternative 2A

THOMAS & HUTTON
 682 JOHNNIE DODDS BLVD., SUITE 100
 MT. PLEASANT, SC 29464 • 843.849.0200
 www.thomasandhutton.com

GEOGRAPHIC INFORMATION SYSTEMS