

Figure 1

Job Number: 26146.0000	Produced: 12/2016	Produced By: HEH	Modified: 1/5/2017	Modified By:
File: F:\26146\26146.0000\GIS\Map\TabSheet\Location Map.mxd				Vertical Datum:
Thomas & Hutton compiled the map information from the following sources:				
Data	Source		Date	
Watershed	T&H		2016	
DISCLAIMER				
Where Thomas & Hutton is cited as the data source, the firm has created or verified the data. For all other sources cited, Thomas & Hutton used the data "as is," has made no independent investigation of the data, and makes no representation as to the accuracy or completeness of the data. Please see each source for available documentation of its respective datasets.				
Copyright © 2015 by Thomas & Hutton				
No part of this document may be reproduced without written permission from an officer of Thomas & Hutton.				

Highway 9 & 57 Drainage Study

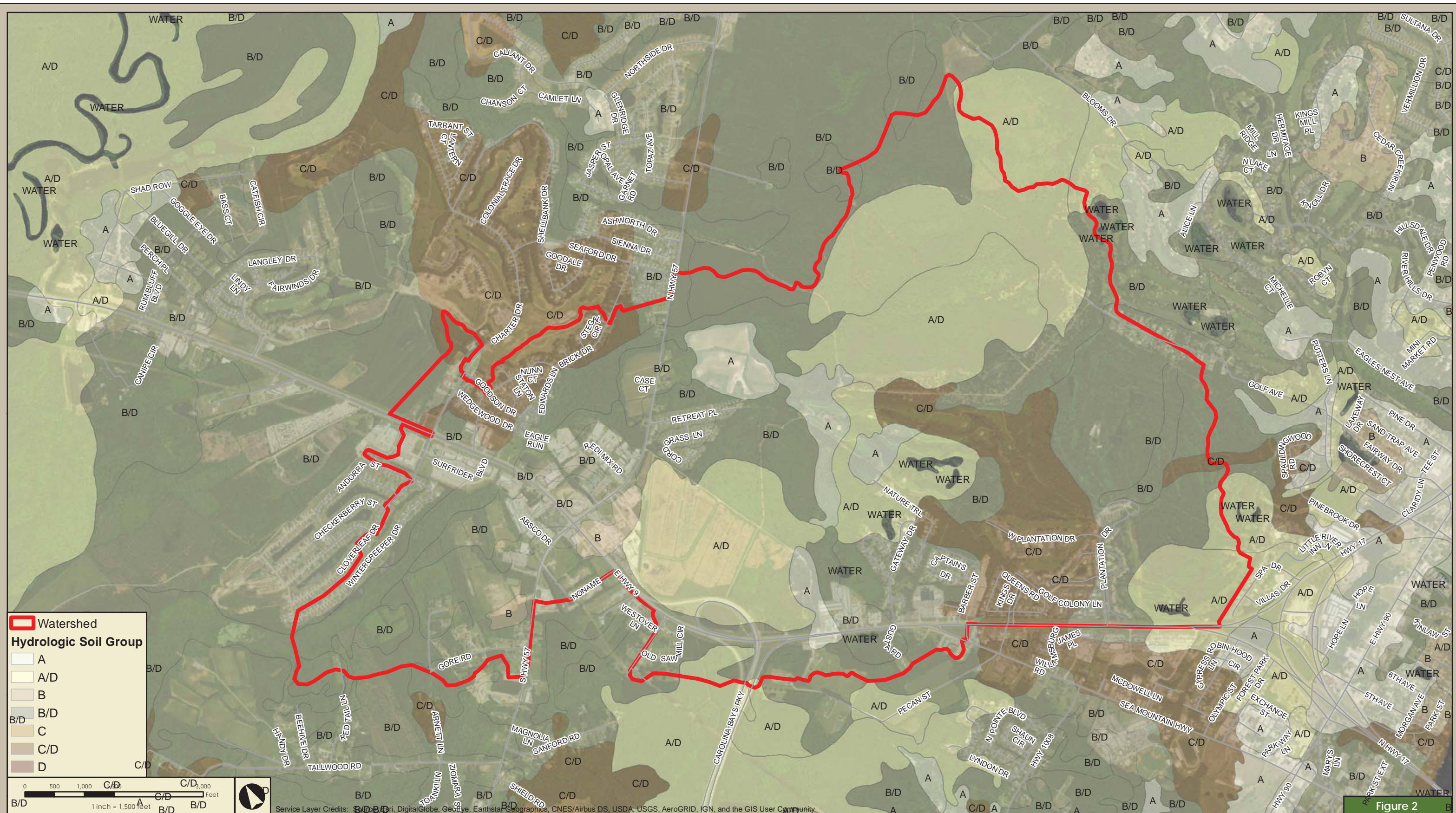
Horry County, South Carolina

Location Map



THOMAS & HUTTON
682 JOHNNIE DODDS BLVD., SUITE 100
MT. PLEASANT, SC 29464 • 843.849.0200
www.thomasandhutton.com

GEOGRAPHIC INFORMATION SYSTEMS



Job Number: 26146.0000	Produced: 12/26/16	Produced By: JEH	Modified: 1/5/2017	Modified By:
File: F:\26146\26146.0000\GIS\Map\Exhibits\SoilMap.mxd			Vertical Datum:	
Thomas & Hutton compiled the map information from the following sources:				
Data		Source	Date	
Watershed		T&H	2016	
Hydrologic Soil Group		SCDNR	2015	
Roads		Horry County	2007	
DISCLAIMER				
Where Thomas & Hutton is cited as the data source, the firm has created or verified the data. For all other sources cited, Thomas & Hutton used the data "as is" has made no independent investigation of the data, and makes no representation as to the accuracy or completeness of the data. p lease use each source for available documentation of its respective datasets.				
Copyright © 2015 by Thomas & Hutton				
No part of this document may be reproduced without written permission from an officer of Thomas & Hutton.				

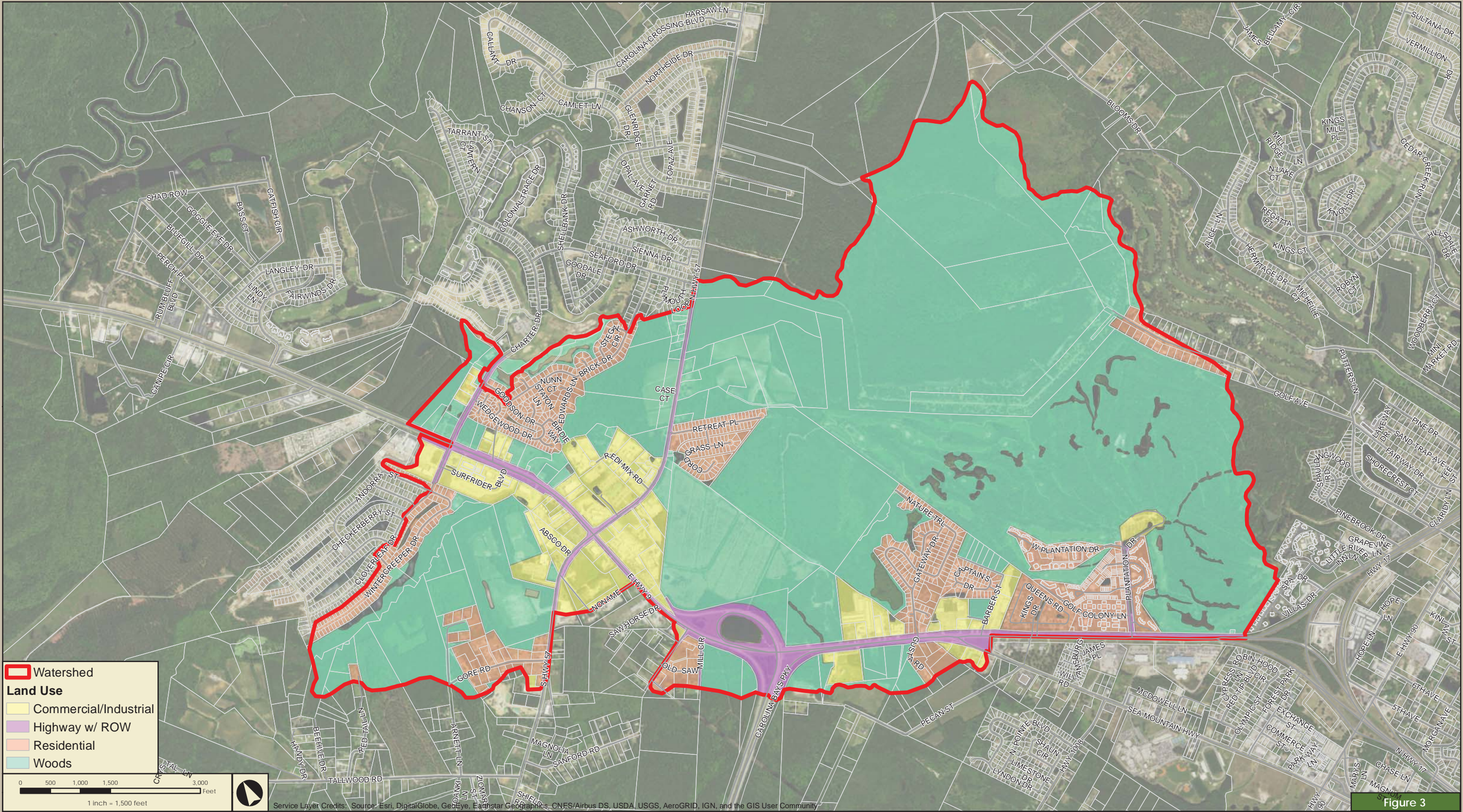
Highway 9 & 57 Drainage Study

Horry County, South Carolina

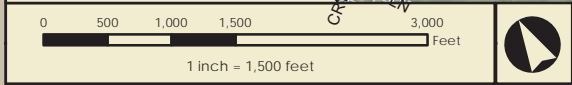
Soils Map

THOMAS & HUTTON
682 JOHNNIE DODDS BLVD., SUITE 100
MT. PLEASANT, SC 29464 • 843.849.0200
www.thomasandhutton.com

GEOGRAPHIC INFORMATION SYSTEMS



- Watershed
- Land Use**
- Commercial/Industrial
- Highway w/ ROW
- Residential
- Woods



Job Number: 26146.0000	Produced: 12/2016	Produced By: HEH	Modified: 1/5/2017	Modified By:
File: F:\26146\26146_0000\GIS\Map\Habitat\HwyCondLine.mxd				
Thomas & Hutton compiled the map information from the following sources:				
Data	Source	Date		
Basin	T&H	2016		
Land Use	T&H	2016		
Roads	Horry County	2007		
DISCLAIMER				
Where Thomas & Hutton is cited as the data source, the firm has created or verified the data. For all other sources cited, Thomas & Hutton used the data "as is," has made no independent investigation of the data, and makes no representation as to the accuracy or completeness of the data. Please use each source for available documentation of its respective datasets.				
Copyright © 2015 by Thomas & Hutton				
No part of this document may be reproduced without written permission from an officer of Thomas & Hutton.				

Service Layer Credits: Source: Esri, DigitalGlobe, GeoEye, Earthstar Geographics, CNES/Airbus DS, USDA, USGS, AeroGRID, IGN, and the GIS User Community

Highway 9 & 57 Drainage Study

Horry County, South Carolina

Existing Conditions Land Use Map



THOMAS & HUTTON
682 JOHNNIE DODDS BLVD., SUITE 100
MT. PLEASANT, SC 29464 • 843.849.0200
www.thomasandhutton.com

GEOGRAPHIC INFORMATION SYSTEMS

Figure 3