

**INSIDE THIS
ISSUE:**

Community Cleanup	1
Highways and Byways	2
Agri-tourism	3
Landscaping Manual	4
Boards and Committees	5
Upcoming Meetings; One Last Note	6

HORRY COUNTY'S 2ND ANNUAL COMMUNITY CLEANUP!

Mark your calendars now for November 7th! Horry County Council, in conjunction with Keep Horry County Beautiful and numerous partners, will host a countywide, volunteer litter cleanup event from 8:30 a.m. to noon on this date. The event will feature 11 locations around the County where volunteers can choose to participate. Sign-in at each location will begin at 8:30 a.m. with roadside pickup to begin at 9:00 a.m. and run until noon.



Volunteers are invited to a post celebration party on the back lawn of the Historic Horry County Courthouse in Conway (1201 3rd Avenue) from 12:00 p.m. until 3:00 p.m. The litter collected at the various locations around the county will be transported to and displayed at the courthouse. There will be food, prizes, entertainment, and more!!

Meeting Sites;

1. North Strand Recreation Center
2. Carolina Forest Recreation Center
3. 21st Ave Government Complex
4. South Strand Recreation Center
5. Socastee Yacht Basin and Park
6. James Frazier Community Center
7. Conway Medical Center
8. Loris Nature Park
9. Green Sea Floyds Library/Senior Center Complex
10. Aynor Park
11. Beach Church

Pre-registration is highly encouraged by October 23rd and available on the Horry County website: www.horrycounty.org. Volunteers may follow the link to pre-register online or may download the preregistration form and mail it to Nancy Tindall, Horry County Planning & Zoning, 1301 2nd Ave., Conway, SC 29526. Individuals are invited to participate as well as church groups, civic organizations, community associations, local businesses, etc. Come out and show your support for a cleaner Horry County!

Volunteers should also download a waiver form to bring to the registration table on the day of the event. One form will be required per individual. **NO ONE WILL BE ALLOWED TO PARTICIPATE IN THE CLEANUP EVENT WITHOUT A SIGNED WAIVER FORM!** Please note that participants who are at least 16 years of age, but under 18 years of age, must have a parent or other legal custodian sign the waiver form. **NO PARTICIPANTS UNDER THE AGE OF 16 YEARS WILL BE ALLOWED TO PARTICIPATE WITHOUT THE PRESENCE OF A PARENT OR LEGAL GUARDIAN.**

Volunteers must wear closed-toe shoes to participate and are encouraged to wear long sleeves, long pants, leather shoes or boots, and eye protection. Trash bags, gloves, a wristband, and a brightly colored t-shirt will be provided the day of the event.

For more information on the 2nd Annual Horry County Community Cleanup Day, contact Nancy Tindall with Horry County Planning & Zoning at tindalln@horrycounty.org or 843-915-5340.

**Horry County
Planning and
Zoning
Department**

1301 Second Ave.,
Suite 1D09
Conway, SC 29526
Phone: (843) 915-5340
Fax: (843) 915-6340

[www.horrycounty.org/
Departments/
PlanningAndZoning.aspx](http://www.horrycounty.org/Departments/PlanningAndZoning.aspx)

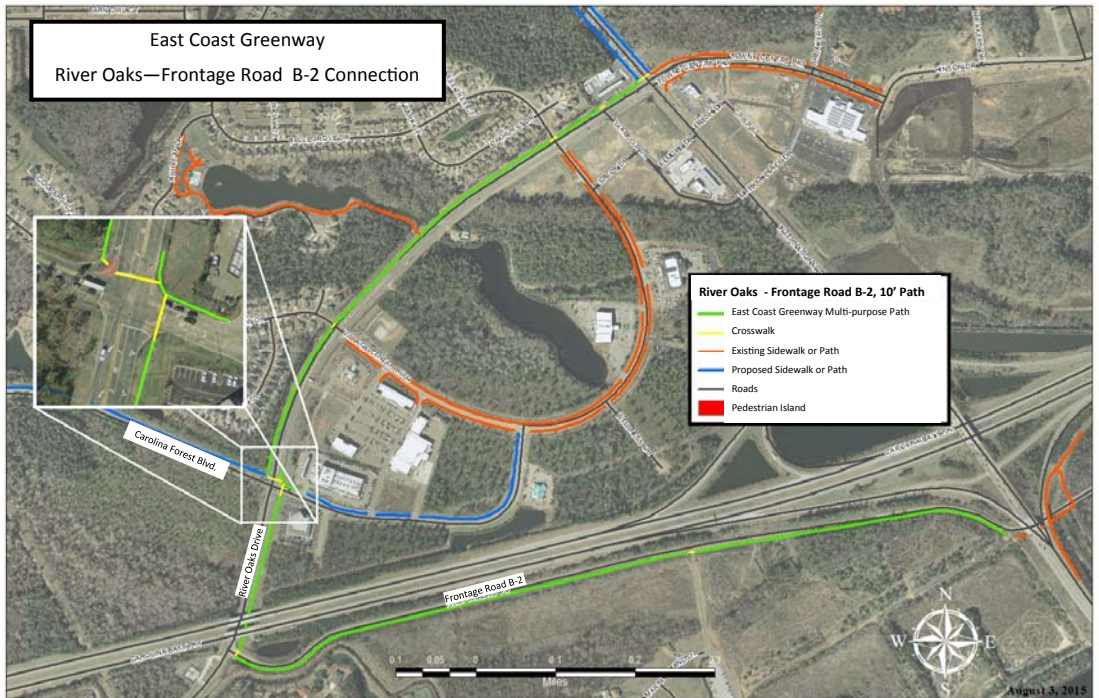


Highways and Byways...

EAST COAST GREENWAY FOR RIVER OAKS

In 2016, Horry County will begin construction on a new 10 foot wide, multi-use path. This path will be located along River Oaks Drive and turn down Frontage Road B-2 to connect to the newly improved Carolina Forest Bike and Run Park. This project will connect two existing bicycle and pedestrian projects and will offer a safer route for those who currently enjoy walking and biking in this area. Once constructed, this path will connect to multiple schools, neighborhoods, and parks.

It also provides a great connection from the City of Myrtle Beach to Towne Center Commons, which is currently one of the fastest growing commercial areas in the county. The already completed 8ft wide path along Town Centre Parkway terminates at the 10,000 acre Lewis Ocean Bay Heritage Preserve/Wildlife Management Area.



The construction of the River Oaks – Frontage Road B-2 connection will serve as a significant step towards providing regional connectivity between Myrtle Beach and North Myrtle Beach portions of the East Coast Greenway, a path that runs along the east coast from Maine to Florida.

The project is specifically mentioned as part of the Horry County Bicycle and Pedestrian Plan and has a specific section dedicated to the Carolina Forest area for bicycle and pedestrian needs in that community. This plan was recommended by the Carolina Forest Civic Association, Horry County Parks and Open Space Board and Horry County. The project was included in the Transportation Alternative Program and approved for funding by the Grand Strand Area Transportation Study Policy Committee June 2015.



Fall Festivals, Hay Rides, Corn Mazes, and Pumpkin Patches

What Agri-tourism Can Mean For Horry County

For many of us, this wonderful time of year will also include a trip to one of the many locations offering fall-themed activities. Maybe you will head to Thompson Farm to make your way through the corn maze, or perhaps you are thinking of attending the Autumn Big Band Blast at La Belle Amie Vineyard. Whatever activities you choose to participate in, you will be contributing to an important growing trend in Horry County and in our country: Agri-tourism.

Agriculture Tourism or “Agri-tourism” refers to activities conducted on a working farm, ranch or other agricultural operation or facility, which offer existing members and the general public opportunities for recreation, entertainment, education, direct sales of value-added agricultural products and/or active or indirect involvement in the farm operation, perhaps through Community Shared Agriculture (CSA shares). While the term Agri-tourism is fairly new, the idea behind it is not. For years, community members in rural America have embraced and enjoyed the wonderful opportunities to visit beautiful farmland, learn about the fine traditions of farming, and appreciate the work of those who are tasked with providing nutritious foods to us all.

Farmers have opened their lands up to visitors who are ready to understand the complex and necessary practices that allow all of us to enjoy a hearty meal at our table. Not only do they take the time to educate us all about from where our food comes, but also share with us the serenity and splendor of the countryside, an escape from the hustle and bustle of our daily urbanized lives and offer a chance to reconnect with the natural world around us.

These activities are intended to diversify the economic viability of the agricultural operation and generate additional income sources for the owner or operator. Agriculture or agricultural production must be the primary use of the land; therefore, all agri-tourism uses or activities should be complimentary and clearly accessory to the primary agricultural use. Activities should be related to agriculture and accessory to agricultural use, and may include, but are not limited to: farm stays, corn mazes, farm-to-table dinners and events, hay rides, harvest festivals, barn dances, pick-your-own produce activities, on-site museums, weddings and other social celebratory events, farm tours, craft fairs, farm operations education or other similar uses.

What farmers have offered by opening up their lands is not just recreation for the public. By participating in many of the activities such as hay rides, corn mazes, pumpkin patches and more, the community is providing a way for local producers to expand the financial possibilities for their land. In a day and age when farming is quickly becoming consolidated into larger operations, agri-tourism is a way for smaller farm operations to supplement their incomes. It allows small farm owners and operators to keep farming as a viable option. Along with the changing relationship agri-tourism creates with the public, this also means a different relationship with the local government. Reevaluation of how agriculture is regulated is necessary to allow farmers in this area to explore the possibilities and opportunities agri-tourism has to offer.

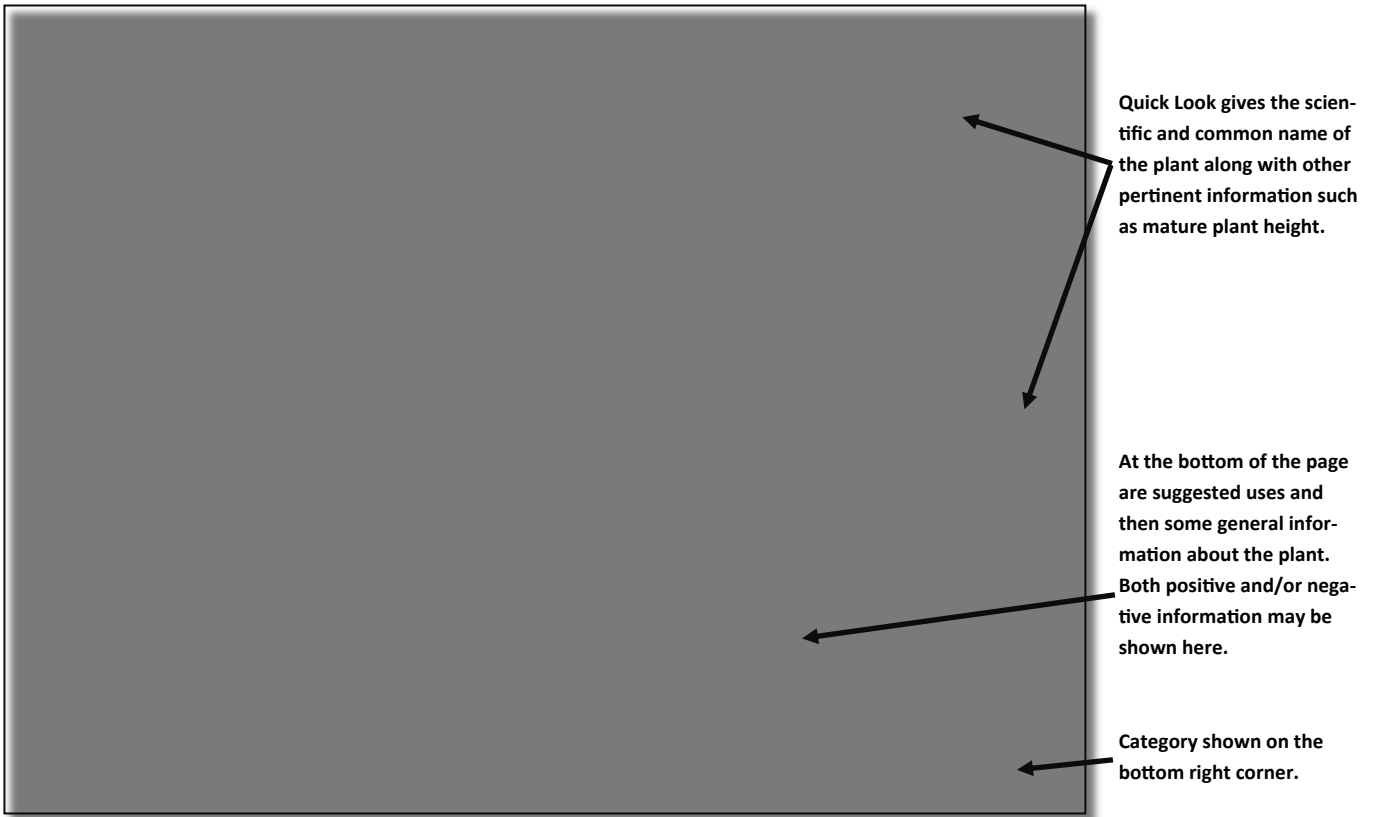
In the next few months, we will be meeting with the community on agriculture, identifying opportunities in Horry County for those interested in learning more about agri-tourism, and collecting information through our 2015 Horry County Agriculture Survey. (See one last note on page 6 for survey information) If you have an interest in agriculture, agri-tourism, or just in being an active citizen in our county, or for more information, please contact Virginia Norris at norrisv@horrycounty.org.

We hope you will join us in supporting the strong agricultural traditions in Horry County!

Horry County Landscape Manual Posted on the Website!

Now designers and home owners can get practical information in regards to what species of plants are recommended for our area from the Horry County Landscape Manual posted online. Plants are site specific. A plant that may work well on one parcel may not work well in another location just down the street. Why? Because there are many variables involved when considering what plant to put where. Sun or shade, wet site or dry, overhead utility lines, native or not, fruit nuisance issues or does the plant attract insects such as bees, just to name a few things to be considered. The landscape manual provides a look at over 200 plants that will do well in our area and provides suggested uses.

As shown on the sample page below, each page contains one tree or shrub with pictures.



The manual is divided by types of tree starting with canopy deciduous and evergreen, then moving to the understory trees, deciduous and evergreen and ending with shrubs divided by height, deciduous and evergreen categories. In addition to the specifics on over 200 recommended plants, there is a native plants list, recommended street trees, and recommended trees for planting near sewer lines at the end of the manual. Also included is a list of prohibit trees and shrubs for our area. The prohibited list has been recently updated using information from the United States Department of Agriculture, and the Southern Research Station, Insect, Disease and Invasive Plants Research Work Unit.

While the manual contains general information about many plants, it is not inclusive of every plant that may successfully live and flourish in this area. However it does provide a selection of acceptable plant material for use within the County. In addition, the vey last page of the manual gives the user links to allow for more in-depth research on additional plant materials, including specific applications such as for a shorescape or rain garden design.



The Horry County Parks and Open Space Board is in the process of updating the Horry County Parks and Open Space Plan. Thus far, a public input survey, six regional focus groups, and an inventory of all public recreation facilities have been completed to identify the recreational needs of Horry County residents. At the next meeting, which is scheduled for October 27th at 12:30 p.m., the Board will discuss the Goals and Implementation Strategies for the plan.

The Parks and Open Space Board has multiple seats available. Please contact your County Councilman if you live in and are interested in representing Council District 3, 4, 6, or 10. Contact Leigh Kane for more information at 915-7034 or kaneL@HorryCounty.org. For more information on this board, visit <http://www.horrycounty.org/Boards/ParksandOpenSpace.aspx>



Keep Horry County Beautiful is currently working on a strategic plan, making final purchases from grants received in 2015, and writing grants to secure funds for 2016.

The KHCB Committee is also working with HC Council to secure site captains for each cleanup location for the upcoming Community Cleanup Day on November 7th. The Committee will present awards at the event to various individuals and groups that have demonstrated outstanding commitment to Keeping Horry County Beautiful.

The Keep Horry County Beautiful Committee meets the 4th Tuesday of the month at 2:30 pm in the Horry County Government and Justice Building in Conway. The public is invited to attend. KHCB is always seeking community cleanup partners. If you would like adopt a road or park in your community, please contact Nancy Tindall at (843)915-7893 or tindalln@horrycounty.org.



The Horry County Board of Architectural Review




The Horry County Board of Architectural Review (BAR) & Historic Preservation is planning a Legacy Business Recognition ceremony at Peaches Corner in Myrtle Beach on October 23rd at 11:00 a.m. A double Legacy Business ceremony is scheduled for December 2nd for Donzelle's Restaurant in Conway at 10:00 a.m., then following at Hucks & Washington Furniture at 10:45 a.m. The Legacy Business Recognition Program recognizes businesses that have contributed to the economic heritage of Horry County for 50 years or more.

The BAR is currently working with the Myrtle Beach Garden Club and the Loris Garden Club to schedule Patriot Tree dedications. Check the BAR & Patriot Tree Project Facebook page for updates.

The next BAR meeting is on October 20th at 2:30 p.m., however the November 17th meeting will be a public hearing, with discussion of properties to be added to the Horry County Historic Register. Both meetings will be in the Government Building located in Conway on 2nd Avenue.

For more information about these projects or to contribute to them please contact Mary Catherine Hyman at 843-915-7891 or email at hymanm@horrycounty.org.

2015 Meeting Calendar

<u>October</u>	<u>November</u>	<u>December</u>
<p>1 Planning Commission; 5:30 PM</p> <p>6 County Council; 6:00 PM</p> <p>12 Zoning Board of Appeals; 5:30 PM</p> <p>20 County Council; 6:00 PM</p> <p>20 Board of Architectural Review; 2:30 PM</p> <p>27 Parks and Open Space Board; 12:30 PM</p> <p>27 Keep Horry County Beautiful; 2:30 PM</p> <p>29 Planning Commission Workshop; 3:00 PM</p>	<p>5 Planning Commission; 5:30 PM</p> <p>9 Zoning Board of Appeals; 5:30 PM</p> <p>10 County Council; 6:00 PM</p> <p>11 Veteran’s Day - Offices Closed</p> <p>17 Board of Architectural Review; 2:30 PM</p> <p>24 Keep Horry County Beautiful; 2:30 PM</p> <p>26-27 Thanksgiving - Offices Closed</p> <p>30 Planning Commission Workshop; 3:00 PM</p>	<p>3 Planning Commission; 5:30 PM</p> <p>8 County Council; 6:00 PM</p> <p>14 Zoning Board of Appeals; 5:30 PM</p> <p>23—25 Christmas - Offices Closed</p>
		

One last note:

Horry County Local Agriculture Survey 2015

What are your thoughts on Farmers Markets in Horry County? Agri-tourism? Local Agriculture or Horticulture? A survey is available for the entire month of October for community feedback. We would like to encourage as many people as possible to participate. The information you will help us understand the needs in our community and how we can encourage and support the agricultural community in Horry County!

YOUR OPINION MATTERS!

This survey is for everyone in the community: producers, restaurant or grocery owners, community members, students, and all consumers in Horry County! Please visit the link below and share your opinion!
 For more information about the survey, please contact Virginia Norris at 843-915-7897 or at norrisv@horrycounty.org

<https://www.surveymonkey.com/r/HorryCountyAgriculture2015>

