



Horry County Memorial Library Board of Trustees Meeting Agenda

Thursday, March 28, 2024, 4:30 p.m.

Horry County Government & Justice Center

Multi-purpose Room D

1301 2nd Avenue, Conway, SC 29526

- I. Call to order**
- II. Pledge of Allegiance**
- III. Public Input**
- IV. Approval of Minutes: Regular Meeting, January 25, 2024**
- V. Library Administration Building Update**
- VI. Director's Report**
- VII. Executive Session**
- VIII. Adjourn**

Please contact Library Administration if you are unable to attend.

Library Administration 843-915-5285 hcmladmin@horrycounty.org

Next Board Meeting: April 25, 2024, 4:30 p.m.

Horry County Government & Justice Center

Multi-purpose Room D

Horry County Investments
 Summary of Certificate of Deposit
 & Money Market Accounts
 For the Month Ended
 February 29, 2024

Date Opened	Maturity Date	Bank Name	Bank Rate	Account Number	Account Name	Jan Investment	Feb Interest	Feb Transfer In	Feb Transfer Out	Feb Investment	Arbitrage (Locked Rate)	Date Closed
1/11/24		Bank	5.00%		Bank of America	695,374.00	1,276.36			696,650.36		
1/29/24		Bank	5.00%		Bank of America	4,276,258.85	81,941.75			4,358,200.60		
						\$4,971,623.21				\$4,991,030.94		



South Carolina Office of State Treasurer

Curtis M. Loftis, Jr.

Local Government Investment Pool

Statement of Account

02/01/2024 - 02/29/2024

HORRY COUNTY TREASURER THOMPSON ESTATE LIBRARY 1301 2ND AVE SUITE 1C09, CONWAY, SC 29526	Account Number:	2595
	Beginning Balance:	695,373.06
	Ending Balance:	698,449.04
	Average Balance:	695,373.06
	Average Interest Rate (365):	5.5675 %

Date	Description	Contributions	Withdrawals	Balance
02/01/2024	Beginning Balance			695,373.06
02/29/2024	Reinvestment	3,075.98		698,449.04

	Funds Received	Funds Withdrawn	Interest Earned
MTD	0.00	0.00	3,075.98
YTD	0.00	8,400.00	25,805.45

800 Shades Creek Parkway, Suite 350, Birmingham, AL 35209



Repurchase Statement

February 28, 2024

Horry County Library
1301 2nd Avenue, Suite 1C09
Conway, SC 29526

Account Information:

Customer number: 001011117750

For Dates: 01/31/2024-02/29/2024

Call us

866-322-5619

This repurchase statement is for your records

Date	Maturity Date	Debit Amount	Rate	Interest	Maturity Amount
01/31/2024	02/01/2024	\$4,276,250.15	4.750 %	\$564.23	\$4,276,814.38
02/01/2024	02/02/2024	\$4,276,814.38	4.750 %	\$564.30	\$4,277,378.68
02/02/2024	02/05/2024	\$4,277,378.68	4.750 %	\$1,693.13	\$4,279,071.81
02/05/2024	02/06/2024	\$4,279,071.81	4.750 %	\$564.60	\$4,279,636.41
02/06/2024	02/07/2024	\$4,279,636.41	4.750 %	\$564.67	\$4,280,201.08
02/07/2024	02/08/2024	\$4,280,201.08	4.750 %	\$564.75	\$4,280,765.83
02/08/2024	02/09/2024	\$4,280,765.83	4.750 %	\$564.82	\$4,281,330.65
02/09/2024	02/12/2024	\$4,281,330.65	4.750 %	\$1,694.69	\$4,283,025.34
02/12/2024	02/13/2024	\$4,283,025.34	4.750 %	\$565.12	\$4,283,590.46
02/13/2024	02/14/2024	\$4,283,590.46	4.750 %	\$565.20	\$4,284,155.66
02/14/2024	02/15/2024	\$4,284,155.66	4.750 %	\$565.27	\$4,284,720.93
02/15/2024	02/16/2024	\$4,284,720.93	4.750 %	\$565.35	\$4,285,286.28
02/16/2024	02/20/2024	\$4,285,286.28	4.750 %	\$2,261.68	\$4,287,547.96
02/20/2024	02/21/2024	\$4,287,547.96	4.750 %	\$565.72	\$4,288,113.68
02/21/2024	02/22/2024	\$4,288,113.68	4.750 %	\$565.79	\$4,288,679.47
02/22/2024	02/23/2024	\$4,288,679.47	4.750 %	\$565.87	\$4,289,245.34
02/23/2024	02/26/2024	\$4,289,245.34	4.750 %	\$1,697.83	\$4,290,943.17
02/26/2024	02/27/2024	\$4,290,943.17	4.750 %	\$566.17	\$4,291,509.34
02/27/2024	02/28/2024	\$4,291,509.34	4.750 %	\$566.24	\$4,292,075.58
02/28/2024	02/29/2024	\$4,292,075.58	4.750 %	\$566.32	\$4,292,641.90
Total		\$85,680,342.20		\$16,391.75	

Average Daily Investment Amount For Month: \$4,284,017.11

Average Daily Rate Amount For Month: 4.750 %

Average Daily Interest Amount For Month: \$819.59

What you need to do

Please review the statement details above to insure the information coincides with your records and retain. If the information does not agree with your records, please notify us immediately.

In the event of default, the customer will have the right to direct the bank to sell the securities and apply the proceeds in satisfaction of any repo seller liability and the bank will not exercise its right of substitution.

Securities are Not FDIC Insured, are not an obligation of or guaranteed by Synovus Bank, and involve investment risks including loss of principal.



Director's Report, February 2024
Meeting Date, March 28, 2024

Request for Approval:

1. Regular Meeting Minutes: January 25, 2024
2. HCML Board of Trustees By-Laws
3. Library Administration Costs
4. Change of Surfside Beach Schedule

Next Meeting: Thursday, April 25, 2024, 4:30 p.m.
Horry County Government & Justice Center
Multipurpose Room D

I. Updates

Library Administration Building Update:

Renovations began on February 5. Windows were delivered on February 6. At the writing of this report, the following has occurred:

- Framed walls removed
- Wood windows removed
- Steel windows removed
- Concrete stoop, steel handrail and brick planter removed
- Casework and utilities removed
- Plumbing fixtures removed
- Steel mezzanine, stairs, railing, dumbwaiter and utilities removed
- Wood stage removed
- Wood shelving removed
- Gypsum board/plaster ceilings removed
- Steel studs for new walls erected

Thompson Bequest Financial Update:
February 2024 Financials Attached

Staff Updates:

Added Employees

None

Withdrawn Employees

Bookmobile: Library Assistant, Youth Services

Employee Transfers

None

Employee Promotions

None

FMLA (Family Medical Leave Act)

Employee 1

Intermittent Leave: ends 4/13/2024

Employee 2

Medical Leave: renewable monthly

Light Duty

None

Current Vacancies

None

II. Library Visits, Meetings & Professional Development:

Tracey Elvis-Weitzel

February

- 2/1: cloudLibrary Meeting with Vendor Representative
- 2/1: Employee of the Quarter Awards Celebration
- 2/1: Mid-Year Meeting with Carolina Forest Library Staff
- 2/2: Patron Point Meeting with Vendor Representative
- 2/5: Mid-Year Meeting with Acquisitions Librarian
- 2/5: Mid-Year Meeting with Surfside Beach Library Staff
- 2/5: Employee of the Year Meeting with Horry County Administration
- 2/6: Mid-Year Meeting with Bucksport Library Staff
- 2/6: Meeting with HGTC Intern
- 2/7: Mid-Year Meeting with Loris Library Staff
- 2/7: Mid-Year Meeting with Socastee Library Staff
- 2/8: T-Mobile Meeting with Vendor Representative
- 2/9: Budget Review Meeting
- 2/13: Special Collections Procedure Meeting
- 2/15: Manager's Meeting
- 2/15: Ingram Meeting with Vendor Representative
- 2/16: Mid-Year Meeting with Conway Library Staff
- 2/20: Public Information Staff – Video for Employee of the Year Celebration
- 2/26: Mid-Year Meeting with Aynor Library Staff
- 2/28: Employee of the Year Celebration
- 2/29: Mid-Year Meeting with North Myrtle Beach Library Staff
- 2/29: Mid-Year Meeting with Little River Library Staff
- 2/29: Loris Library Staff Visit

Lynn McKiernan Doyle

February

- 2/1: cloudLibrary Meeting with Vendor Representative
- 2/1: Employee of the Quarter Awards Celebration
- 2/1: Mid-Year Meeting with Carolina Forest Library Staff
- 2/2: Patron Point Meeting with Vendor Representative
- 2/3: Conway Library Staff Visit
- 2/5: Mid-Year Meeting with Acquisitions Librarian
- 2/5: Mid-Year Meeting with Surfside Beach Library Staff
- 2/5: Employee of the Year Meeting with Horry County Administration
- 2/6: Mid-Year Meeting with Bucksport Library Staff
- 2/6: Horry County First Steps Board Meeting
- 2/7: Mid-Year Meeting with Loris Library Staff
- 2/7: Mid-Year Meeting with Socastee Library Staff
- 2/8: T-Mobile Meeting with Vendor Representative
- 2/9: Budget Review Meeting
- 2/13: Special Collections Procedure Meeting
- 2/13: Youth Services Meeting
- 2/14: StoryWalk® at James R. Frazier Recreation Center
- 2/15: Manager's Meeting
- 2/15: Ingram Meeting with Vendor Representative
- 2/16: Mid-Year Meeting with Conway Library Staff
- 2/26: Mid-Year Meeting with Aynor Library Staff
- 2/28: Employee of the Year Celebration
- 2/29: Mid-Year Meeting with North Myrtle Beach Library Staff
- 2/29: Mid-Year Meeting with Little River Library Staff
- 2/29: Loris Library Staff Visit

Closed Days

February - None

III. Other:

1. Notable Monthly Statistics:
 - Event attendance increased 21.5% from February 2023 to February 2024.
 - Public computer access increased 12.4% over February 2023.
 - 2,372 wireless internet sessions occurred in February 2024, which is an 18.2% increase from the same month last year.
 - Over 50,000 citizens visited a library during February 2024.
2. Social media interactions are increasing since staff are creating more interactive posts.
3. Megan Deal, Branch Librarian at Conway Library, was nominated for Horry County Employee of the Year.
4. The Director and Assistant Director have completed mid-year visits with each library.
5. Library Administration has an intern from Horry-Georgetown Technical College. The intern's area of focus is outreach and programs for the aging.
6. Fleet Services is researching the possibility of acquiring a new Bookmobile. Staff would like a smaller, easier-to-use vehicle.

IV. Library Updates:

Aynor Library

February

- The Youth Services Library Assistant visited Green Sea-Floyds Library to observe the Home School Meet-Up. Beginning in March, Aynor Library will host a Home School Meet-up for local homeschooling families.
- The library manager completed the final book order to enhance the collection. Patrons have noticed and selected items are circulating well.
- Staff rearranged the public computer area, creating a fresher look to the area. Patrons seem pleased with the new area and have made several comments regarding how much they like the new setup.



Bookmobile

February

- Staff and patrons enjoyed the presentation by Horry County Museum about *Auction House Attempted Co-ops, and Allotments: The Impact of Flue-Cured Tobacco on Horry County, SC*.
- Coastal High Charter School students have helped determine which materials and other resources teens and tweens would like access to on the Bookmobile. The Bookmobile manager included many of these titles in the Bookmobile collection order.

- Seven passive stops were conducted throughout the month with several people visiting the Bookmobile.



Bucksport Library

February

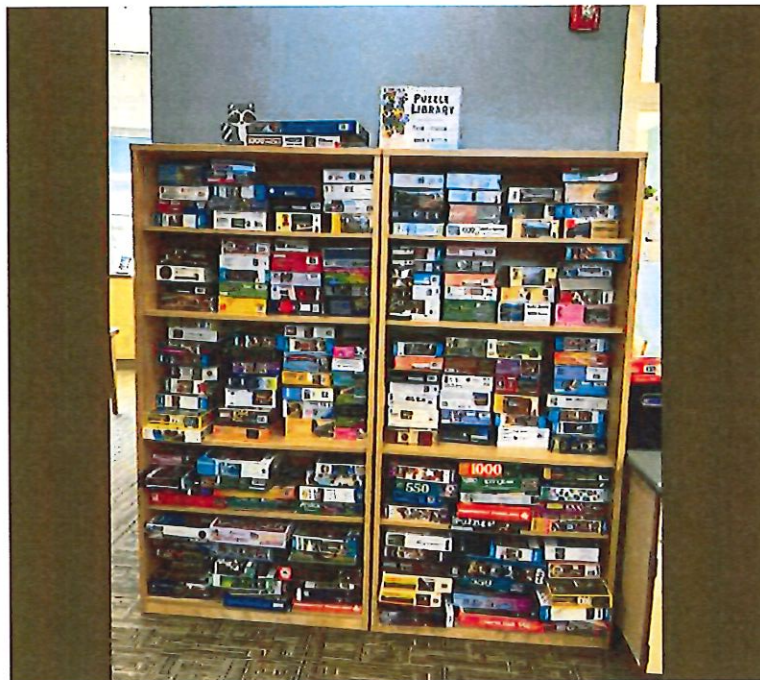
- The entryway of the library has been given a new, updated look. Outdated furnishings were removed and replaced with smaller, less cluttered shelving. Community information is more readily available for visitors.
- Many new patrons have started to visit the library, some with hygiene needs. Staff decided to help by placing personal hygiene products in the restrooms for anyone to take, if needed. A few patrons like the idea so much that they donated supplies for the library to continue the project.
- Youth services Staff attended an event at Horry County Schools Early College called *A Date with a Book*. Staff wrapped the books, added a description on the cover and the students picked a book based on the description. Over one hundred ninth graders that participated.



Carolina Forest Library

February

- Carolina Forest Library relaunched the Seed Library in preparation for spring planting. It was relaunched with additional information about planting in the area, and an accompanying selection of gardening books for check out. The Seed Library also now has a mini greenhouse with lights, which is currently housing several beds of germinating plants. Once these plants are bigger, they will be planted in the courtyard garden. The new set up is attracting a lot of attention. In February, 113 seed packets were borrowed.
- The Senior Center next to the library has officially opened. Staff are excited for all of the outreach opportunities it offers.
- The puzzle library is becoming a beloved resource for the Carolina Forest Community, who have proven to be enthusiastic jigsaw puzzlers. In the middle of the month, staff began keeping stats of how many puzzles are borrowed. Fifty-three puzzles have been borrowed since February 9th. One patron was so excited to see the puzzle library that they shared a photo on a Jigsaw Puzzle Facebook group. The patron came back to show the Branch Librarian that the photo had received 27,000 likes, 2,500 shares and 1,500 comments.



👍👎👤 27K

1.5K comments 2.5K shares

👍 Like

💬 Comment

➦ Share

- As Carolina Forest has been an early voting location for presidential elections, many people believe that they can vote early at the library for all elections. Throughout the month, they stopped at the library, assuming that they can vote. This month, prior to election days, Carolina Forest Library staff helped over 536 people register to vote or find their polling and early voting locations for the Republican and Democratic primaries. This dramatically increased Reference statistics. Many voters also took the opportunity to get library cards and learn about what the library has to offer. While voters were frustrated that voting locations were so confusing, staff were able to utilize the situation to demonstrate how helpful and beneficial the library is to the community.

Conway Library February

- Gullah Geechee Community Day was February 24th. Five instructional sessions were held in the South Carolina room with almost one-hundred people in attendance.
- Youth Services staff met with and distributed wrapped books to over a hundred students at Horry County Schools Early College a Blind Date with a Book event. One of the students told Youth Services staff that, "This is the most excited I've ever been about books."
- Conway Library staff held a patron appreciation raffle for Library Lovers Month. The winners were pulled February 29th from over eight hundred entries.
- Conway Library's Seed Library is now open.



Green Sea-Floyds Library February

- The Branch Manager presented a Money 101 program specifically on the exploitation of aging adults. This presentation was part of the grant program from the American Library Association and Capital One. It was a difficult conversation but informative.
- Kathy Nieuwenhuis was the guest for the Green Sea-Floyds Clovers 4-H in February. She taught students how to sew quilting squares by hand. Once pieced together, the library will display the quilt for the community to enjoy.
- Home School Meet-Up has seen a steady increase in family involvement. In February, students learned about goats and made rafts during their STEM activity, celebrated Valentine's Day by making slime, wrote a fairy tale, and celebrated Dr. Seuss by reading books and completing a science project based on *One Fish, Two Fish, Red Fish, Blue Fish*.



Little River Library

February

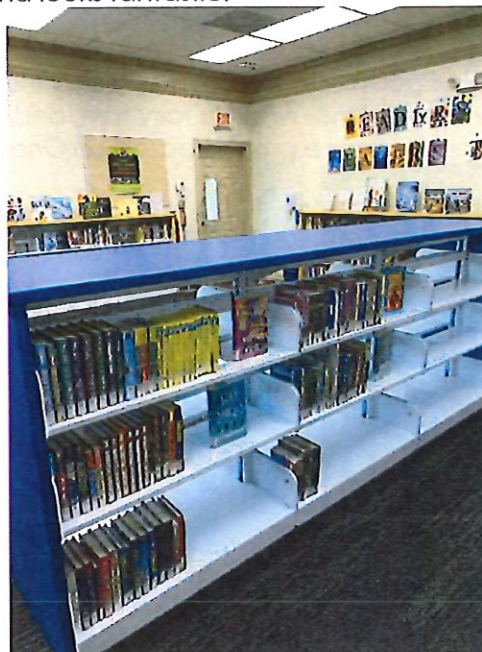
- Staff have worked to create a section for children and young adult new materials. This makes newly purchased items easier to find.
- Little River Library has partnered with the South Carolina Department of Employment (SCDEW) and Workforce to prepare an accessible and user-friendly area for SCDEW community participants
- The Rotary Club wrote a grant and provided a large book donation to Little River and North Myrtle Beach Libraries.



Loris Library

February

- The library manager provided a CD player to one of the library's senior patrons. The patron came in to pick up holds and was given discarded audio books. The patron was thrilled and said she couldn't wait to listen to them, but the batteries on her CD player were dead and it would be the first of the month before she could get new ones. On her next visit, the manager provided a CD player with a power cord, as well as additional discarded audio books.
- A grandmother from Preschool Storytime said her granddaughter makes her play "library" at home. As "Miss Jeni," the granddaughter checks books out to her grandmother and gives her a receipt, and as "Miss Haley" she reads to her stuffed animals and dances around.
- New shelving for the Children's area has arrived to replace bent and broken shelving. It brightens up the space and looks fantastic.



North Myrtle Beach Library

February

- Winter visitor season is wrapping up soon. From one happy nonresident patron: *"We're headed back to Canada tomorrow. See you all next year. This is the best \$10 we spend while we are here!"*
- Patrons have been very pleased with the new activity space in the Young Adult room, using it for card clubs, library programs, group study with the whiteboard, knitting circles, computer help, and individual study. In previous years, this was not possible during tax season with the meeting room booked up. The Branch and Reference Librarians will be work to add technology for public use in the space, as well.
- Faxing and printing generate a large part of public service, especially during tax season. It is a great opportunity for staff to connect with residents, promote library resources, and leave them with a great impression of libraries. Many users during this time are pleasantly surprised at how busy the library is, how much it offers, and how helpful the staff is.

Socastee Library

February

- The playground at Socastee Library has reopened. Equipment was updated and brought up to code. It was also pressure washed and looks amazing. The parents and children are really enjoying the space.
- A patron crocheted twelve shaky eggs for use during storytime with the babies. They have a crocheted handle so the baby can hold on to the egg.
- The Seed Library has been restocked and is ready for use. Four Green Sea-Floyds Library patrons have requested seeds from the Socastee Seed Library.



Surfside Beach Library

February

- For our adult programs (trivia, movie, book clubs, bingo) staff have started to setup at least 30-45 minutes before the sessions begin as active seniors and visitors enjoy having the extra time to socialize. This has made a difference. Many of the seasonal visitors have expressed how much this library feels like coming back home to them. They treasure the Surfside Beach Library and staff for all that is provided. Patrons have recently stated, *"From the bottom of my heart I want to thank you. Your friendship, kindness and concerns you shared toward me is so appreciated."* – *"I love that you have large print*

books and Thursday movies." –"I love how welcoming you are and how much care you put into making books available."

- Two incident reports were filed with both related to seniors that had either fallen or collapsed in the library due to underlying health and/or mobility issues. Subsequently, a walker has also been purchased for the library to assist those with mobility needs.
- Staff welcomed a group of memory care patients from the Palmettos of Garden City, who enjoyed an outing to the library. The Birdwatching Kit was setup for the visitors along with bird themed coloring pages and many nonfiction bird guide books. The group enjoyed coffee and the special visit to the library. Their Facebook post stated that their "Friday started off with a pink sky and a trip to Horry County Memorial Libraries. Kim and Andrea at Surfside were so friendly and accommodating. Today we talked about birds. We love our library!"



V. *Interlibrary Loans*

February 2024

- Borrowed **403** items from other institutions
- Loaned **217** items to other institutions

VI. *Social Media Statistics*

February 2024

See attached

VII. **Attachments:**

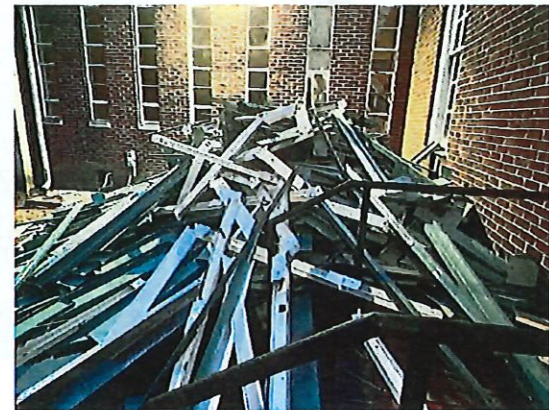
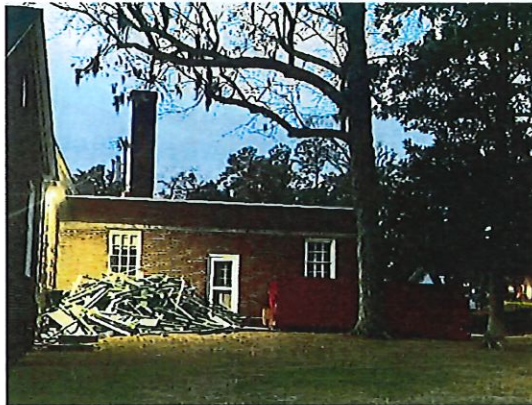
1. Thompson Bequest Funds Update: February 2024
2. Horry County Memorial Library Budget Report: February 2024
3. Public Service Activity Statistics: February 2024

VIII. Renovation Photos

January 24, 2024



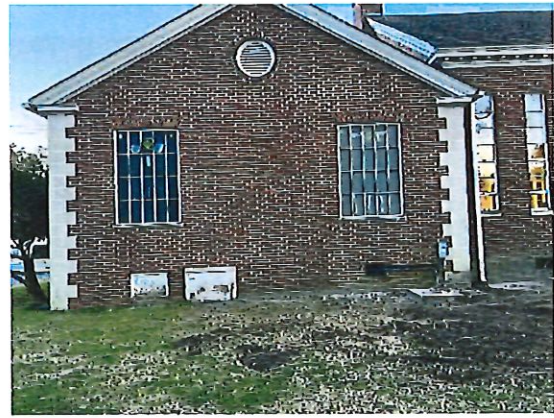
February 8, 2024



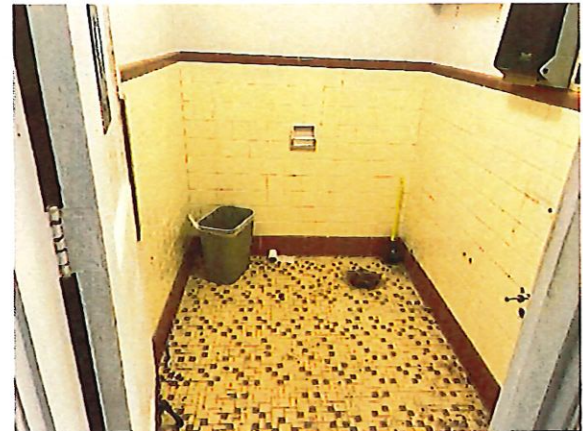
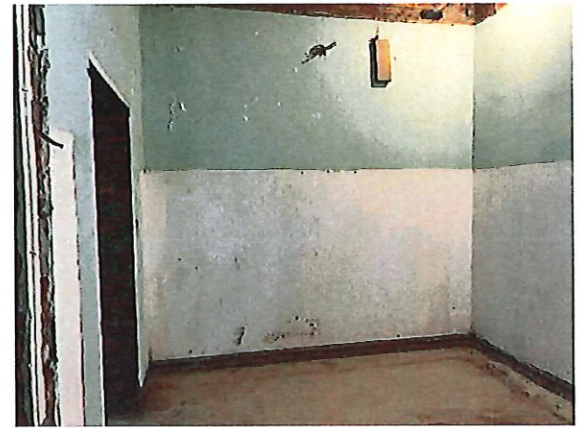
February 14, 2024

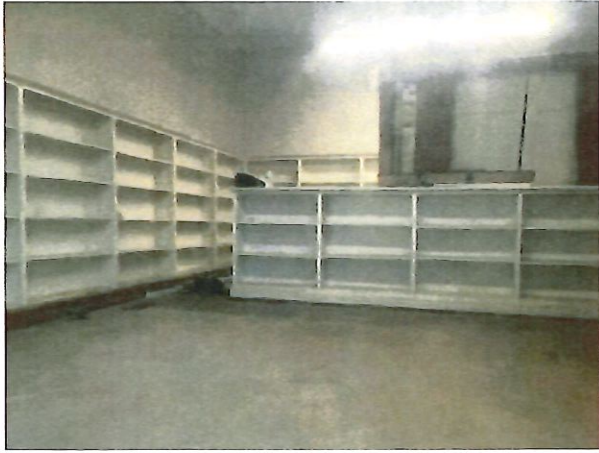


February 20, 2024



February 23, 2024






Horry County Library Department Fiscal Year 2023-2024

Summary by Fund

Preliminary February, 2024 Year-to-Date

	Operating	Grants Fund	Gifts-Conway Library Endowment	Fiduciary-Library Endowment	Capital Projects Fund
	Fund 100 Department 126	Fund 490	Fund 486	Fund 830	Fund 200
Intergovernmental	\$ 592,522	\$ 42,543	\$ -	\$ -	\$ -
Fees/Fines	58,120	-	-	-	-
Interest/Other	-	-	\$ 134,374	723	-
Total Revenues	650,642	42,543	134,374	723	-
Personnel Costs	2,428,093	-	-	-	-
Contractual Services	508,702	-	-	-	-
Supplies & Materials	881,469	-	-	-	-
Business & Transportation	25,638	-	-	-	-
Other	63,489	50,204	-	-	-
Capital Outlay	-	-	-	-	14,142
Total Expenditures	3,907,391	50,204	-	-	14,142
Subtotal - Net Surplus (Deficit) before Transfers	(3,256,749)	(7,660)	134,374	723	(14,142)
Transfer In	-	-	-	-	75,000
Transfer Out	(75,000)	-	-	-	-
Total Net Surplus / (Deficit) taken from Fund Balance	\$ (3,331,749)	\$ (7,660)	\$ 134,374	\$ 723	\$ 60,858
Est. Available Fund Balance (General Fund Unassigned)	\$ (3,331,749)	\$ (7,660)	\$ 4,980,023	\$ 48,894	\$ 2,284,646

Summary of Operating Revenue & Expenditures

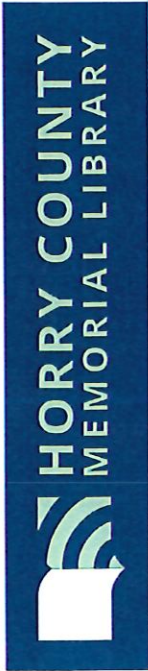
Fund 100 Department 126

Preliminary February, 2024 Year-to-Date

OBJECT	ACCOUNT DESCRIPTION	ORIGINAL APPROP	TRANSFRS/ ADJSMTS	REVISED BUDGET	YTD ACTUAL	ENCUMBRANCES	AVAILABLE BUDGET	% USED
REVENUES:								
Intergovernmental								
411008	State-library	(789,812.00)	-	(789,812.00)	(592,522.14)	\$ -	\$ (197,289.86)	75.0%
411020	State-lottery	-	-	-	-	-	\$ -	
Fees/Fines								
420000	Fees-copies	(75,000.00)	-	(75,000.00)	(40,425.05)	-	(34,574.95)	53.9%
420027	Fees-library	(35,000.00)	-	(35,000.00)	(17,694.81)	-	(17,305.19)	50.6%
	Total Revenues	(899,812.00)	-	(899,812.00)	(650,642.00)	-	(249,170.00)	72.3%
EXPENDITURES:								
Personnel Costs								
500000	Salaries-regular	2,685,402.00	-	2,685,402.00	1,550,131.94	-	1,135,270.06	57.7%
500001	Salaries-overtime	350.00	-	350.00	14.95	-	335.05	4.3%
500003	Salaries-temporary	170,120.00	-	170,120.00	47,320.15	-	122,799.85	27.8%
500005	Board members	2,000.00	-	2,000.00	-	-	2,000.00	0.0%
500006	Taxes-FICA	202,157.00	-	202,157.00	122,511.53	-	79,645.47	60.6%
500007	Retirement-regular	498,439.00	-	498,439.00	287,634.29	-	210,804.71	57.7%
500010	Insurance-health	525,858.00	-	525,858.00	349,749.25	-	176,108.75	66.5%
500011	Insurance-life	5,528.00	-	5,528.00	3,388.27	-	2,139.73	61.3%
500012	Insurance-workers comp	12,047.00	-	12,047.00	4,426.98	-	7,620.02	36.7%
500013	Insurance-bond	544.00	-	544.00	369.25	-	174.75	67.9%
500014	Insurance-tort	6,632.64	-	6,632.64	4,279.00	-	2,353.64	64.5%
500016	Insurance supplemental tort	1,345.00	-	1,345.00	854.00	-	491.00	63.5%
500018	HR Employee medical	22,774.00	-	22,774.00	15,182.64	-	7,591.36	66.7%
500034	Gift	14,539.00	-	14,539.00	42,230.67	-	(27,691.67)	290.5%
Contractual Services								
510000	Electricity	310,666.27	(1,600.00)	309,066.27	145,140.89	-	163,925.38	47.0%
510001	Water & sewer	24,909.72	-	24,909.72	13,092.07	-	11,817.65	52.6%
510002	Telephone	10,000.00	-	10,000.00	6,009.12	-	3,990.88	60.1%
510003	Cellular & data	36,733.86	-	36,733.86	21,862.94	-	14,870.92	59.5%
510005	Professional services	25,000.00	-	25,000.00	8,832.50	-	16,167.50	35.3%
510006	Service contracts	39,887.53	-	39,887.53	42,867.28	1,159.29	(4,139.04)	110.4%
510007	Advertising & signs	1,300.00	-	1,300.00	-	-	1,300.00	0.0%

Summary of Operating Revenue & Expenditures
Fund 100 Department 126
Preliminary February, 2024 Year-to-Date

OBJECT	ACCOUNT DESCRIPTION	ORIGINAL APPROP	TRANSFRS/ ADJSMTS	REVISED BUDGET	YTD ACTUAL	ENCUMBRANCES	AVAILABLE BUDGET	% USED
510008	Rents & leases	13,494.04	1,600.00	15,094.04	10,304.44	3,832.99	956.61	93.7%
510010	Insurance-bldg/contents	82,566.20	-	82,566.20	52,449.52	-	30,116.68	63.5%
510011	Insurance-vehicle	5,863.37	-	5,863.37	3,513.53	-	2,349.84	59.9%
510012	Insurance-other	237.51	-	237.51	150.80	-	86.71	63.5%
510014	Computer services	164,921.75	-	164,921.75	135,122.32	-	29,799.43	81.9%
510015	Storm water fees	3,326.32	-	3,326.32	1,890.06	-	1,436.26	56.8%
510019	Pest control	7,378.75	-	7,378.75	915.00	-	6,463.75	12.4%
510024	Maintenance service contracts	-	70,949.00	70,949.00	60,273.80	10,513.25	161.95	99.8%
510025	Refunds and overpayments	500.00	-	500.00	-	-	500.00	0.0%
510033	Inter library loan charges	400.00	-	400.00	197.94	-	202.06	49.5%
510053	Credit card fees	12,003.69	-	12,003.69	6,079.29	3,071.76	2,852.64	76.2%
Supplies & Materials								
520000	Furniture non-capital	22,280.55	-	22,280.55	10,537.01	-	11,743.54	47.3%
520001	Printing & binding	8,500.00	-	8,500.00	8,429.54	-	70.46	99.2%
520002	Postage	1,500.00	-	1,500.00	136.98	-	1,363.02	9.1%
520004	Office supplies	26,000.00	(2,500.00)	23,500.00	11,625.32	-	11,874.68	49.5%
520007	Equipment non-capital	11,310.73	-	11,310.73	11,038.54	-	272.19	97.6%
520012	Food Supplies	1,000.00	-	1,000.00	-	-	1,000.00	0.0%
520013	Cleaning supplies	16,500.00	-	16,500.00	8,212.91	-	8,287.09	49.8%
520016	Specialized supplies	45,323.43	-	45,323.43	21,161.18	-	24,162.25	46.7%
520017	Uniforms & clothing	1,100.00	-	1,100.00	-	-	1,100.00	0.0%
520018	Books & educational supplies	450,000.00	-	450,000.00	638,126.00	311,459.97	(499,585.97)	211.0%
520020	Libra Maint InHse Repairs&Main	101,850.00	-	101,850.00	80,407.07	-	21,442.93	78.9%
520023	Operating expenditures	-	11,785.82	11,785.82	-	-	11,785.82	0.0%
520025	Audio visual supplies	100,000.00	-	100,000.00	409.81	-	99,590.19	0.4%
520026	E-books	405,000.00	-	405,000.00	-	-	405,000.00	0.0%
520027	Electronic resources	60,088.85	-	60,088.85	40,253.01	-	19,835.84	67.0%
520029	Periodicals	45,000.00	-	45,000.00	1,488.03	-	43,511.97	3.3%
520030	IT equipment non-capital	27,652.77	-	27,652.77	25,187.88	-	2,464.89	91.1%
520050	Maintenance in-house projects	-	49,797.55	49,797.55	-	-	49,797.55	0.0%
520099	Mang Print Serv Allocations	26,235.49	-	26,235.49	24,455.98	-	1,779.51	93.2%

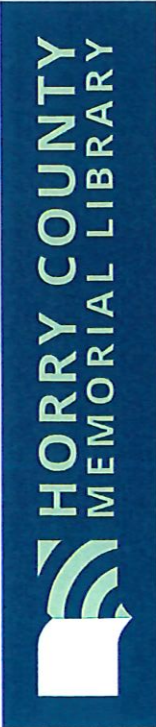


Summary of Operating Revenue & Expenditures

Fund 100 Department 126

Preliminary February, 2024 Year-to-Date

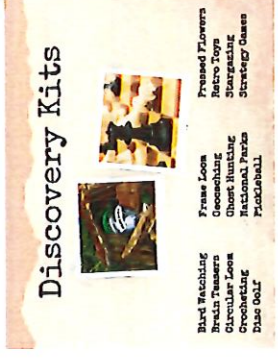
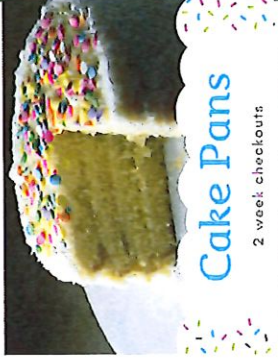
OBJECT	ACCOUNT DESCRIPTION	ORIGINAL APPROP	TRANFRS/ ADJSMTS	REVISED BUDGET	YTD ACTUAL	ENCUMBRANCES	AVAILABLE BUDGET	% USED
Business & Transportation								
530000	Memberships & dues	2,885.18	2,500.00	5,385.18	4,865.01	-	520.17	90.3%
530001	Training & meetings	10,300.00	-	10,300.00	7,869.26	-	2,430.74	76.4%
530003	Gas & lubricants	20,000.00	-	20,000.00	9,603.29	-	10,396.71	48.0%
530005	Maintenance-vehicle	15,184.00	-	15,184.00	3,300.57	-	11,883.43	21.7%
Other								
580001	Vehicle cost recovery	42,756.00	-	42,756.00	28,504.00	-	14,252.00	66.7%
584046	Chapin Library	35,000.00	-	35,000.00	35,000.00	-	-	100.0%
580031	Over/short	-	-	-	(14.68)	-	14.68	100.0%
550001	State park pass program	-	8,391.92	8,391.92	-	-	8,391.92	0.0%
Transfer Out								
582000	Transfer out	100,000.00	-	100,000.00	75,000.00	-	25,000.00	75.0%
Total Expenditures \$		6,462,391.65 \$	140,924.29 \$	6,603,315.94 \$	3,982,391.13 \$	330,037.26 \$	2,290,887.55	


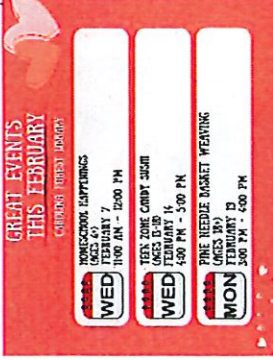

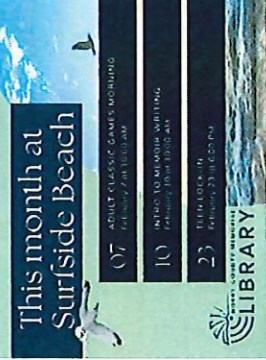






Summary of Capital Projects Revenue & Expenditures
 Fund 200 Department 126
 Preliminary February, 2024 Year-to-Date

OBJECT	ACCOUNT DESCRIPTION	ORIGINAL APPROP	TRANSFRS/ADJSMTS	REVISED BUDGET	YTD ACTUAL	ENCUMBRANCES	AVAILABLE BUDGET	% USED
REVENUES:								
Transfer In								
480010	Transfer for general	\$ (100,000.00)	-	\$ (100,000.00)	\$ (75,000.00)	-	\$ (25,000.00)	75.0%
480030	Transfer for Libr Thomp Estate	-	(1,760,072.80)	(1,760,072.80)	-	-	(1,760,072.80)	0.0%
	Total Revenues	(100,000.00)	(1,760,072.80)	(1,860,072.80)	(75,000.00)	-	(1,785,072.80)	4.0%
EXPENDITURES:								
Capital Outlay								
540016	Library Capital projects	100,000.00	100,000.00	200,000.00	13,600.00	-	186,400.00	0.0%
540016	Conwy LibEndowCapital projects	-	1,760,072.80	1,760,072.80	14,142.13	1,707,757.78	38,172.89	97.8%
540016	Capital projects-Aynor	-	25,000.00	25,000.00	-	-	25,000.00	0.0%
540016	Capital projects-Bookmobile	-	5,000.00	5,000.00	-	-	5,000.00	0.0%
540016	Capital projects-Bucksport	-	25,000.00	25,000.00	-	-	25,000.00	0.0%
540016	Capital projects-GS Floyds	-	25,000.00	25,000.00	-	-	25,000.00	0.0%
540016	Capital projects-Little River	-	80,000.00	80,000.00	-	-	80,000.00	0.0%
540016	Capital projects-Socastee	-	80,000.00	80,000.00	-	-	80,000.00	0.0%
540032	Loris Library Land/Parking	-	-	-	-	-	-	0.0%
Contingency								
550000	Lib Contingency	-	23,715.00	23,715.00	-	-	23,715.00	0.0%
Other								
580014	Library RFID	-	-	-	-	-	-	#DIV/0!
	Total Expenditures	\$ 100,000.00	\$ 2,123,787.80	\$ 2,223,787.80	\$ 27,742.13	\$ 1,707,757.78	\$ 488,287.89	

Description	Impressions	Reach	Reactions	Comments	Shares	Total clicks	Photo Clicks	Other Clicks	Link Clicks
<p>Check out our cake pan collection at bit.ly/HCMLCakePans.</p> <p>What shape cake are you going to make?</p>	5407	5281	143	41	23	913	56	595	262
<p>Check out the events we have planned for February at bit.ly/HCMLevents</p> <p>Which event are you most excited for?</p>	790	738	12	1	3	32	3	3	26
<p>Looking for your next adventure? Want to start a new hobby? #HorryCountyMemorialLibraries has fully assembled kits to get you started.</p> <p>Request a kit today at bit.ly/HCMLDIScoveryKits</p>	2556	2408	36	4	10	81	16	42	23




<p>VOX Books are audiobooks attached to print books so there is no need for computers, tablets, or CDs. Simply push a button to listen and read! 🎧</p> <p>Check out our VOX books collection here - https://bit.ly/HCMRead-Along</p>		2904	2663	21	2	12	39	6	22	11
<p>Here are some anticipated events at #CarolinaForestLibrary for February! Visit bit.ly/HCMLevents to discover what additional events we have planned.</p>		753	711	7	1	0	32	5	17	10
<p>Here's some of next month's highlights for #GreenSeaFloydsLibrary What are you excited about for February?</p>		3994	3975	20	2	9	45	24	13	8
<p>#SurfsideBeachLibrary has exciting programs going on throughout February for all ages! One new program is Adult Classic Games Morning. What types of games do you like playing? Curious about other programs? Check us out at bit.ly/HCMLevents.</p>		872	807	9	1	2	5	5	12	5

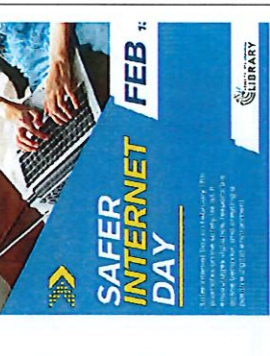
<p>We're excited to say that the playground at #SocasteeLibrary has re-opened!! Enjoy playground time from sunup to sundown, after storytime, and for some running around right before naptime. Find out about storytime and other library events at bit.ly/HCMLevents.</p>		751	687	30	6	3	30	2	24	4
<p>What are your favorite movies borrow from the library? Comment below!</p>	 <p>Aging Gracefully HCMML For Seniors & Caregivers Wednesday, February 20th 10:00 AM - 1:00 PM Age 50+ / \$2.00 fee www.HCMML.org</p> <ul style="list-style-type: none"> 1. Personal Time 2. Communication Strategies 3. Mental Well-Being 4. Engagement 	381	323	6	5	0	13	9	4	
<p>Join us for one or both sessions with our presenter Diane Ferrucci at the #NorthMyrtleBeachLibrary. Find all #HorryCountyMemorialLibrary events at bit.ly/HCMLevents.</p>		528	466	5	0	2	10	4	2	4
<p>Did you know #BucksportLibrary has arts and crafts classes for all ages? Check out bit.ly/HCMLevents for more fun activities! What kinds of crafts do you like to create?</p>		493	438	5	1	0	8	5	3	

<p>Join the Friends of the Library at #NorthMyrtleBeachLibrary for a meet and greet with Denny Hamann, local author of the newly released Cottonville Road II: The Rocky River Washed My Sins Away. Find all Horry County Memorial Library events at bit.ly/HCMLevents.</p>		864	819	5	0	0	7	2	2	3
<p>Here are just a few events at #AynorLibrary for February! Visit bit.ly/HCMLevents to discover what additional events we have planned.</p>		545	520	9	0	0	5	1	2	2
<p>It's mad libs time! For your personal book title, grab your closest book, and flip to a page. Take the page number, the first noun you see, and your name. Your personal book title will be: "The (number) (nouns) of (your name)".</p>		992	887	14	15	1	53	5	47	1
<p>HCML wants to highlight its African American History database this week, covering nearly 500 years of history, during Black History Month. Explore the collection for historical figures, source documents, and more. bit.ly/HistoryDatabase</p>		497	454	10	0	1	2	1	1	1

<p>That's right! We want to see your library Shelfies! Leave a comment with your shelfie in front of your favorite shelf at your favorite #HorryCountyMemorialLibrary branch. Don't forget to tag us!</p>		1232	1136	17	9	2	81	2	79
<p>Let's see your library book sale haul! Every Wednesday in February the #LoriLibrary is hosting a book sale! Come in and fill a bag for just \$5! Then share a picture of the goodies you found! We'll try not to be jealous of your book bargains 🙄</p>		1043	972	24	12	4	73	4	69
<p>It's library lovers day and we want to hear about what you love most about your local library! Tag your favorite branch and share pictures or a fun story. We love to hear from you!</p>		868	788	30	24	5	72	5	67
<p>Today, #HorryCountyMemorialLibrary staff is wearing red in support of National Wear Red Day® & American Heart Month! #OurHearts Show us your best red outfit in the comments!</p>		972	876	52	0	5	170	128	42

<p>Making Candy Sushi for Teens!</p> <p>Join us at #CarolinaForestLibrary for a sweet and fun-filled event, where teens aged 13-18 can celebrate Valentine's Day with friends by learning to make their very own candy sushi. Don't miss out on this unique and delicious experience!</p> <p>Registration is needed. Call 843-915-5282 to sign up now!</p>	 <p>ROLL YOUR OWN SUSHIDATE! COME MAKE SUSHI WITH FRIENDS OR COME WITH A DATE! ACES 13-18 Wednesday, February 16 - 6:00 PM</p> <p>DON'T LIKE SUSHI? THIS SUSHI IS MADE OUT OF CANDY!</p>	882	811	11	1	1	26	6	20
<p>It's that time of year again! #HorryCountyMemorialLibrary has partnered with AARP and #UnitedWayofHorryCounty to bring FREE tax preparation at select library locations.</p>	 <p>Need help with your taxes?</p>	5182	4451	26	0	20	113	100	13
<p>Crayola Creativity Week is a free program designed to celebrate children's creativity and the joy it brings to teaching and learning any subject. Crayola has partnered with artists, actors, authors, musicians, and even an Olympic athlete, to bring educational content, giveaways, and virtual events to kids everywhere. The #GreenSeaFloydsLibrary will have activities all week to help bring out the creativity in everyone!</p>	 <p>CRAYOLA CREATIVITY WEEK</p> <p>Drop in all week to explore your creative side, or stop by: Baby/Toddler Story - Tuesday, Jan 23rd at 10 AM All Age Story Time - Tuesday, Jan 23rd at 4 PM Full STEAM Ahead - Thursday, Jan 25th at 4 PM</p> <p>At Green Sea Floyds Library</p>	862	775	9	2	3	15	3	12

<p>Happy Groundhog Day from #HorryCountyMemorialLibraries! What are some of your favorite quotes about spring?</p>		680	632	8	3	0	5	1	4
<p>Check out what we have happening in February at #ConwayLibrary!</p>		356	331	5	0	1	7	4	3
<p>Check out these upcoming events at #LittleRiverLibrary this month! Find all Horry County Memorial Library events at bit.ly/HCMLevents.</p>		472	417	4	0	2	4	1	3
<p>Time to test your movie, music, and T.V. trivia! Join us at #SurfsideBeachLibrary on January 30th at 3:00 PM for an extra round of our bi-weekly trivia. Check out other upcoming trivia days at bit.ly/HCMLevents.</p>		530	478	5	0	2	3	2	3

<p>Check out some of the new events at #SocasteeLibrary this month!</p>		537	486	6	0	1	2	1	1
<p>Did you know #BucksportLibrary has a get-together at their branch every Monday morning for adults? Feel free to stop by between 9:00 AM and 11:00 AM to relax, sip a cup of coffee or tea, and chat with your fellow library members.</p>		622	575	9	0	0	1	1	1
<p>Take online safety seriously! February 13th is Safer Internet Day. Horry County Memorial Library wants to remind you to be safe online every day. If you do need help, one-on-one tech assistance is also provided at numerous branches throughout the county.</p>		277	245	1	0	0	0	0	0

Horry County Memorial Library
Public Service Activity for February 2024
Monthly

	Circulation			In-house Use			Event Attendance			Meeting Rm Attendance		
	This Month	This Month Last Year	Percent Change	This Month	This Month Last Year	Percent Change	This Month	This Month Last Year	Percent Change	This Month	This Month Last Year	Percent Change
Aynor	1,573	1,454	8.2%	31	14	121.4%	103	102	1.0%	13	0	0.0%
Bookmobile	1,181	1,276	-7.4%	0	0	0.0%	965	733	31.7%	0	0	0.0%
Bucksport	875	755	15.9%	23	5	360.0%	20	86	-76.7%	8	20	-60.0%
Carolina Forest	15,190	14,587	4.1%	742	536	38.4%	649	857	-24.3%	486	555	-12.4%
Conway	10,561	10,733	-1.6%	258	302	-14.6%	1,595	1,238	28.8%	212	219	-3.2%
Green Sea/Floyds	1,132	1,056	7.2%	251	53	373.6%	612	296	106.8%	10	9	11.1%
Little River	2,476	3,054	-18.9%	43	23	87.0%	246	224	9.8%	39	32	21.9%
Loris	1,669	1,591	4.9%	119	55	116.4%	220	135	63.0%	33	20	65.0%
North Myrtle Beach	11,585	11,714	-1.1%	318	482	-34.0%	835	873	-4.4%	376	220	70.9%
Socastee	12,283	11,857	3.6%	88	148	-40.5%	1,517	1,063	42.7%	864	649	33.1%
Surfside Beach	10,358	10,428	-0.7%	274	109	151.4%	1,153	906	27.3%	876	980	-10.6%
Library To Go	29	0	0.0%		0	0.0%		0	0.0%		0	0.0%
cloudlibrary	17,284	15,673	10.3%									
hoopla	7,930	7,113	11.5%									
ILL borrowing	403	367	9.8%									
ILL lending	217	201	8.0%									
Total	94,746	91,859	3.1%	2,147	1,727	24.3%	7,915	6,513	21.5%	2,917	2,704	7.9%

	Public Printing			Computer Access			Wi-Fi Use			Reference Questions		
	This Month	This Month Last Year	Percent Change	This Month	This Month Last Year	Percent Change	This Month	This Month Last Year	Percent Change	This Month	This Month Last Year	Percent Change
Aynor	814	1,057	-23.0%	205	138	48.6%	57	47	21.3%	134	108	24.1%
Bookmobile	0	0	0.0%	4	4	0.0%	4	4	0.0%	11	14	-21.4%
Bucksport	503	450	11.8%	45	77	-41.6%	35	43	-18.6%	110	166	-33.7%
Carolina Forest	3,789	3,453	9.7%	670	518	29.3%	642	478	34.3%	740	380	94.7%
Conway	8,263	7,149	15.6%	810	759	6.7%	439	387	13.4%	651	578	12.6%
Green Sea/Floyds	320	329	-2.7%	103	131	-21.4%	59	69	-14.5%	78	63	23.8%
Little River	1,866	1,806	3.3%	197	183	7.7%	159	110	44.5%	212	191	11.0%
Loris	1,302	1,438	-9.5%	236	209	12.9%	75	42	78.6%	35	67	-47.8%
North Myrtle Beach	4,988	4,549	9.7%	774	773	0.1%	262	254	3.1%	288	377	-23.6%
Socastee	4,563	3,945	15.7%	594	563	5.5%	356	279	27.6%	141	64	120.3%
Surfside Beach	4,615	5,065	-8.9%	861	647	33.1%	284	293	-3.1%	261	450	-42.0%
Library To Go		0	0.0%		0	0.0%		0	0.0%		0	0.0%
Total	31,023	29,241	6.1%	4,499	4,002	12.4%	2,372	2,006	18.2%	2,661	2,458	8.3%

	New Customers Registered This Month	New Customers Registered This Month Last Year	Percent Change	Customer Traffic Count This Month	Customer Traffic Count This Month Last Year	Percent Change	Enterprise / Website Users This Month	Enterprise / Website Users This Month Last Year	Percent Change
Aynor	18	25	-28.0%	797	722	10.4%			
Bookmobile	4	19	-78.9%	227	411	-44.8%			
Bucksport	2	7	-71.4%	473	521	-9.2%			
Carolina Forest	284	212	34.0%	9,292	6,964	33.4%			
Conway	171	205	-16.6%	9,262	8,288	11.8%			
Green Sea/Floyds	11	21	-47.6%	1,298	1,318	-1.5%			
Little River	65	67	-3.0%	2,888	2,504	15.3%			
Loris	21	19	10.5%	1,106	1,111	-0.5%			
North Myrtle Beach	135	150	-10.0%	8,030	7,173	11.9%			
Socastee	168	173	-2.9%	8,987	6,819	31.8%			
Surfside Beach	218	184	18.5%	7,973	7,706	3.5%			
Library To Go		0	0.0%		0	0.0%			
Total	1,097	1,082	1.4%	50,333	43,537	15.6%	11,303	10,663	6.0%

Horry County Memorial Library

Public Service Activity Through February 2024

YEAR TO DATE

	Circulation			In-house Use			Event Attendance			Meeting Rm Attendance		
	This Month	This Month Last Year	Percent Change	This Month	This Month Last Year	Percent Change	This Month	This Month Last Year	Percent Change	This Month	This Month Last Year	Percent Change
Aynor	12,852	14,956	-14.1%	272	271	0.4%	1,099	1,154	-4.8%	37	15	146.7%
Bookmobile	11,576	7,208	60.6%	6	0	0.0%	5,125	2,214	131.5%	0	0	0.0%
Bucksport	6,852	6,522	5.1%	132	125	5.6%	621	707	-12.2%	56	182	-69.2%
Carolina Forest	126,314	120,458	4.9%	5,005	3,819	31.1%	4,530	5,182	-12.6%	2,717	12,840	-78.8%
Conway	94,633	96,884	-2.3%	2,173	3,172	-31.5%	7,714	5,574	38.4%	2,994	2,145	39.6%
Green Sea/Floyds	8,690	9,893	-12.2%	1,078	548	96.7%	3,860	2,468	56.4%	80	70	14.3%
Little River	21,844	25,580	-14.6%	662	149	344.3%	2,015	2,212	-8.9%	289	186	55.4%
Loris	14,269	13,594	5.0%	588	773	-23.9%	1,721	609	182.6%	216	304	-28.9%
North Myrtle Beach	93,869	92,377	1.6%	2,554	3,255	-21.5%	4,721	5,065	-6.8%	2,148	2,228	-3.6%
Socastee	102,139	102,574	-0.4%	649	2,675	-75.7%	9,658	6,174	56.4%	5,222	4,556	14.6%
Surfside Beach	82,769	82,940	-0.2%	3,515	1,591	120.9%	5,927	4,347	36.3%	5,032	4,930	2.1%
Library To Go	253	0	0.0%									
cloudlibrary	143,242	131,661	8.8%									
hoopla	60,191	55,491	8.5%									
ILL borrowing	2,991	2,349	27.3%									
ILL lending	1,588	1,416	12.1%									
Total	784,072	763,903	2.6%	16,634	16,378	1.6%	46,991	35,706	31.6%	18,791	27,456	-31.6%

	Public Printing			Computer Access			Wi-Fi Use			Reference Questions		
	This Month	This Month Last Year	Percent Change	This Month	This Month Last Year	Percent Change	This Month	This Month Last Year	Percent Change	This Month	This Month Last Year	Percent Change
Aynor	5,514	6,619	-16.7%	1,236	1,205	2.6%	449	335	34.0%	833	778	7.1%
Bookmobile	0	0	0.0%	24	26	-7.7%	24	38	-36.8%	104	53	96.2%
Bucksport	2,211	2,551	-13.3%	551	386	42.7%	326	257	26.8%	781	1,448	-46.1%
Carolina Forest	25,165	25,022	0.6%	4,557	4,584	-0.6%	4,735	3,208	47.6%	2,391	1,997	19.7%
Conway	49,106	50,914	-3.6%	6,990	6,239	12.0%	3,506	2,552	37.4%	2,683	2,071	29.6%
Green Sea/Floyds	2,137	2,036	5.0%	755	970	-22.2%	453	367	23.4%	658	582	13.1%
Little River	10,836	13,860	-21.8%	1,605	1,692	-5.1%	1,099	756	45.4%	1,680	1,673	0.4%
Loris	10,181	13,200	-22.9%	1,478	1,780	-17.0%	487	407	19.7%	400	299	33.8%
North Myrtle Beach	28,520	26,121	9.2%	6,645	5,739	15.8%	1,983	1,452	36.6%	2,364	1,781	32.7%
Socastee	32,110	27,277	17.7%	5,454	4,432	23.1%	2,638	1,700	55.2%	1,391	653	113.0%
Surfside Beach	24,337	23,693	2.7%	5,668	5,039	12.5%	1,985	1,773	12.0%	1,923	1,642	17.1%
Library To Go												
Total	190,117	191,293	-0.6%	34,963	32,092	8.9%	17,685	12,845	37.7%	15,208	12,977	17.2%

	New Customers Registered This Month	New Customers Registered This Month Last Year	Percent Change	Customer Traffic Count This Month	Customer Traffic Count Last Year	Percent Change	Enterprise / Website Users This Month	Enterprise / Website Users Last Year	Percent Change
Aynor	155	181	-14.4%	6,192	6,396	-3.2%			
Bookmobile	106	61	73.8%	1,489	1,390	7.1%			
Bucksport	91	69	31.9%	3,544	3,645	-2.8%			
Carolina Forest	1,952	2,000	-2.4%	59,292	62,962	-5.8%			
Conway	1,586	1,484	6.9%	61,257	56,934	7.6%			
Green Sea/Floyds	74	102	-27.5%	9,913	9,532	4.0%			
Little River	565	612	-7.7%	20,735	21,330	-2.8%			
Loris	189	444	-57.4%	7,291	8,656	-15.8%			
North Myrtle Beach	1,158	1,079	7.3%	51,423	47,164	9.0%			
Socastee	1,339	1,218	9.9%	58,293	50,808	14.7%			
Surfside Beach	1,407	1,354	3.9%	53,102	51,268	3.6%			
Library To Go	1	0	0.0%						
Total	8,623	8,604	0.2%	332,531	320,085	3.9%	92,326	86,915	6.2%

